



# MOTOR POOL MESSENGER

MILITARY TRANSPORT ASSOCIATION OF NORTH JERSEY

March/April/May 1988....Volume 16, Number 2

Editor: Dennis R. Spence, POB 1913, Blfd, NJ 07003 201-743-1851

## Coming Events

- we missed you!*
- May 7,8, Sat-Sun - Allentown (Pa) gun show. Agric. Hall. Forks/Delaware.
- May 9 - Monday evening - MTA membership meeting, Florham Park, NJ (Bonanza, 7:30 PM)
- May 14, Sat - Open house at Picatinny Arsenal (date subject to confirmation)
- May 13-15 - Fri,Sat,Sun - East Coast SPRING rally, Aberdeen, Maryland. Further information elsewhere in this issue.
- May 30 - Mon - Parade in Caldwell, N.J. rain or shine.
- June 4,5, Sat-Sun - Allentown (Pa) militaria and gun show. G.Washington Motor Lodge. A new show - this is their second. 170 tables.
- June 13, Mon evening - MTA membership meeting, Florham Park, NJ
- June 25, Sat - Meadowlands militaria show, Union, NJ (Boy's club)
- July 1 - Friday evening - Fairfield, NJ parade, meet at 6:30 PM  
*June 26, Sun - work party*
- July 4 - Monday - Parade in Florham Park, NJ
- July 11, Monday - MTA membership meeting
- July 22-24 - Conn. rally, Tolland, Conn.
- Aug 19-21 - New England club summer rally, Maynard, Mass.
- Sept 9-11 - East Coast FALL rally, Stillwater, NJ

### MTA OFFICERS 1988

Pres: Lou Sliazis, 201-887-0771  
V. Pres: Keith Adams, 201-887-7310  
Sec: Gary Schultz, 201-729-3711  
Treas: Peter Berendsen, 201-966-1862  
Parade Chrman: Bob Hauck, 201-785-2092  
Programs: Peter Berendsen  
Deputy Parades: Harold Ratzburg, 201-887-2574

**Yugo-Buick joint adventure.** As a show of goodwill, the Yugoslavian government has returned a WWII Buick-built M-18 tank destroyer to the U.S. The M-18, dubbed "Hellcat," was given to the Yugoslavian government as part of the U.S. Lend-Lease program at the end of the war. We realize Buick-powered *Wildcats* are used in the American Racing Series. No word has come on whether this vehicle has been used as a template for Balkan Peninsula racing program.

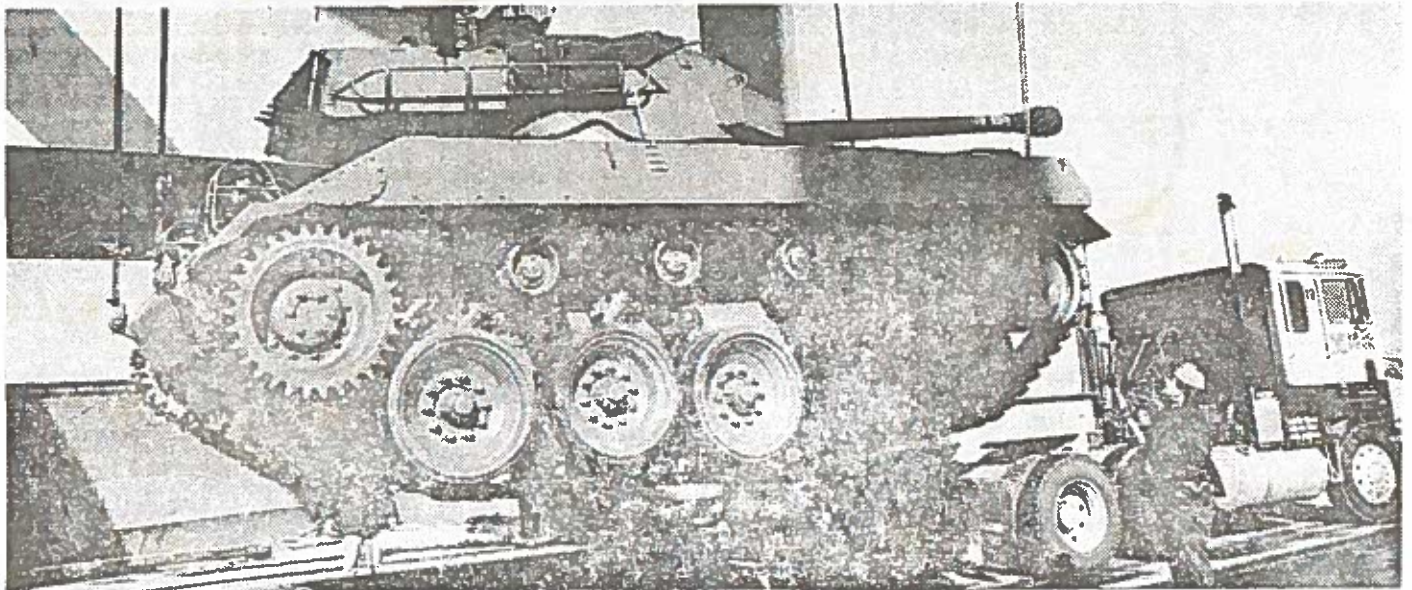


'Hellcat': Wouldn't Yugo rather have a Buick?

AUTOWEEK FEBRUARY 15, 1988  
More on page 2.

EXPECTED TO BE AT ABERDEEN RALLY:

**YUGOS SEND WORLD WAR II TANK-DESTROYER**



ITS 76-MM. GUN shrouded, tank destroyer arrives in Red Hook. M-18 HELLCAT tank destroyer. Built by Buick, ww2.

# War machine a gift to museum

By **BILL FARRELL**  
Daily News Staff Writer

A vintage World War II M-18 tank-destroyer, built by the Buick Division of General Motors and restored to mint condition by the Yugoslavian government, was welcomed home Friday morning at Pier 11 in Red Hook. [Brooklyn]

While there were no brass bands on the dock to greet the returning veteran, a handful of enthusiastic spectators were on hand as the vehicle was unloaded from a Yugoslavian cargo ship, the Koper Express of the Jugoliniga Line.

The refurbished tank-destroyer was loaded onto a trailer for transport to its permanent home at the Military Museum of Southern New England in Danbury, Conn.

The M-18 was donated to

the museum by the government of Yugoslavia.

**Used by Allies**

Built in 1944, the tank-destroyer was used by Allied troops as they made their final push across Germany's western front in 1945. At the end of the war, the tank destroyers were declared obsolete and given to various European nations, including Italy, Spain, and Yugoslavia, according to Dennis Ambruso, the ordnance director of the museum.

Among those on hand at the pier to greet the vehicle were Jim Giannone and Ralph Carl, former Brooklynites who served on tank-destroyers during the war.

"Isn't she beautiful," Giannone said. "She's in perfect shape. This is just like the one we used as we rode." He said as GIs, they had traveled

from the Rhone to the Elbe, across Europe, to join up with the Russians.

"They were the fastest things we'd ever seen," he said of the M-18s. "They could go 65 miles an hour; they could really move."

Giannone, who now lives in Huntington Station, and his buddy, Carl, who lives in West Hempstead, served together in the 463d Tank Destroyer Battalion.

"We were like the adopted children of the war," said Carl. "We were with the 1st Division when they needed us. We were with the 3d Division when we were needed. We were with Monty (British Field Marshal Bernard Law Montgomery), and we were trapped for 10 days with the 82d at the Bulge."

As for the M-18, which is again fully operational, it will

be on view at the museum starting this summer. "I can't tell you how pleased we were when the Yugoslavian government told us they were going to donate the tank-destroyer to us. There are only two others in the entire country," said John Valluzzo, the museum's administrator.

One is at the Aberdeen (Md.) Proving Grounds and the other is at the Patton Museum at Fort Knox, Ky. But this is the only one that is operational."

A new museum building, on Backus Ave. in Danbury, will be opened this summer, and will display eight types of tank-destroyers, all of which have been fully restored and are operational. "There were only 10 different types built," Valluzzo said. "We will have the largest collection anywhere."

**Subscribe now.**

**MILITARY VEHICLES**

- (1) Year (6 issues) - \$12
- (2) Year (12 issues) - \$20

P.O. Box 174B, Union, N.J. 07083

CONVERTO airborne TRAILER enthusiasts. Repro (2 pages) of rare supplement to TM 5-9084. Includes wiring diagram. \$1 postpaid (\$2 overseas). Portrayal Press, POB 1913, Bloomfield, N.J. 07003

# 15<sup>th</sup> ANNUAL SPRING EAST COAST RALLY -

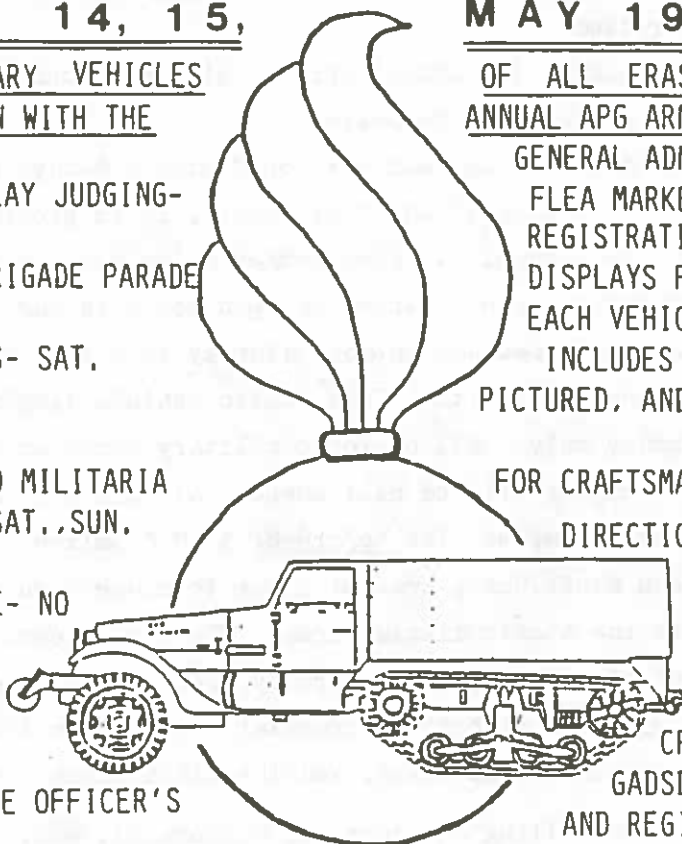
13, 14, 15,

MILITARY VEHICLES  
IN CONJUNCTION WITH THE

VEHICLE AND DISPLAY JUDGING-  
SAT.  
ORDNANCE CORPS BRIGADE PARADE  
FRI.  
U.S. ARMY EXHIBITS- SAT.  
AUCTION- SUN.

VEHICLE PARTS AND MILITARIA  
SWAP MEET- FRI., SAT., SUN.  
APG MUSEUM  
CAMPING AVAILABLE- NO  
HOOKUPS.  
FOOD CONCESSION-  
ON BASE- SAT.

BRUNCH SUN. AT THE OFFICER'S  
CLUB.



MAY 1988

OF ALL ERAS  
ANNUAL APG ARMED FORCES OPEN HOUSE

GENERAL ADMISSION BY DONATION  
FLEA MARKET SPACE- \$10  
REGISTRATION OF VEHICLES AND  
DISPLAYS FOR JUDGING- \$5.00  
EACH VEHICLE OR DISPLAY  
INCLUDES NUMBERED DASH PLATE  
PICTURED, AND QUALIFIES REGISTRANT

FOR CRAFTSMAN TOOL SET DOOR PRIZE.

DIRECTIONS TO APG- 195 TO  
EXIT 85(RT.22), RT.22  
SOUTH TO APG, THRU  
GATE. TAKE FIRST RIGHT  
ONTO GARDEN DRIVE.  
CROSS RR TRACKS TO  
GADSDEN RD. BIVOUAC AREA  
AND REGISTRATION TENT ON RIGHT.

## ABERDEEN PROVING GROUND

### AREA MOTELS(PARTIAL LISTING)

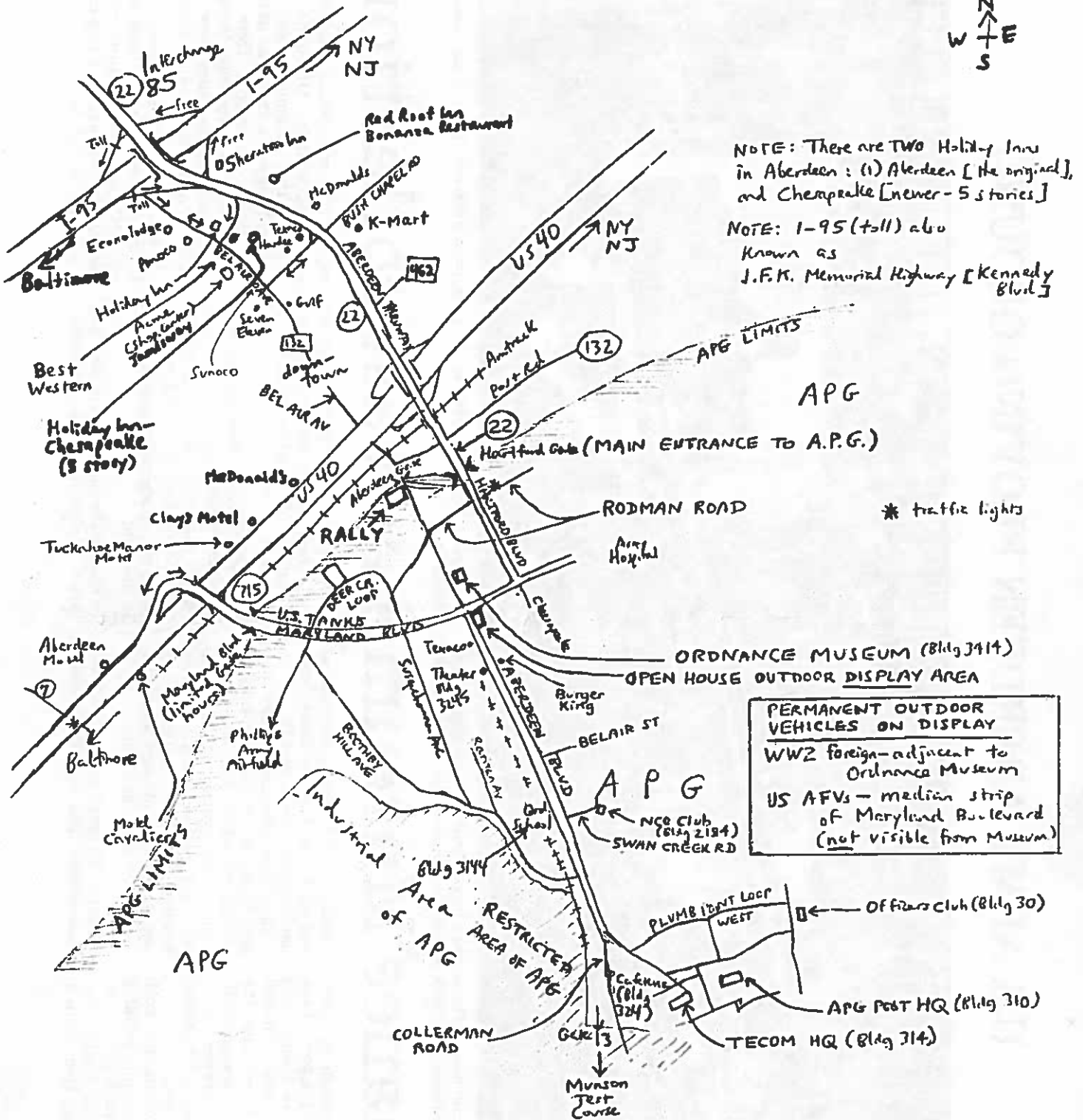
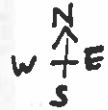
ABERDEEN MOTEL, ROUTE 40 WEST, 301-272-2401  
CAVALIER MOTEL, ROUTE 40 WEST, 301-272-4100  
ECONOLOGDE, KENNEDY BLVD. AND RT.22, 301-272-5500  
HOLIDAY INN, KENNEDY BLVD. AND RT.22, 301-272-6000  
RED ROOF INN, KENNEDY BLVD. AND RT.22, 301-273-7800  
SHERIDAN INN, KENNEDY BLVD. AND RT.22, 301-273-6300

FOR MORE INFORMATION CALL  
DICK DEREN, 703-347-0868 OR MORT MORTHIMER, 301-894-7081  
SPONSORED BY THE EAST COAST RALLY ASSOCIATION

# 15<sup>th</sup> - ANNUAL SPRING EAST COAST RALLY -

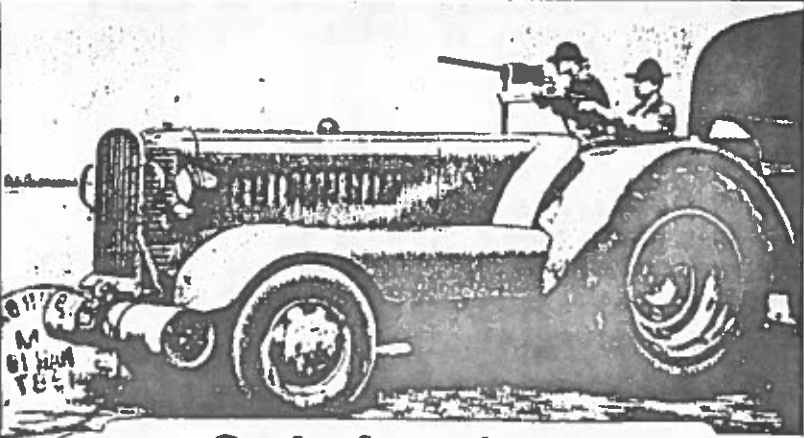
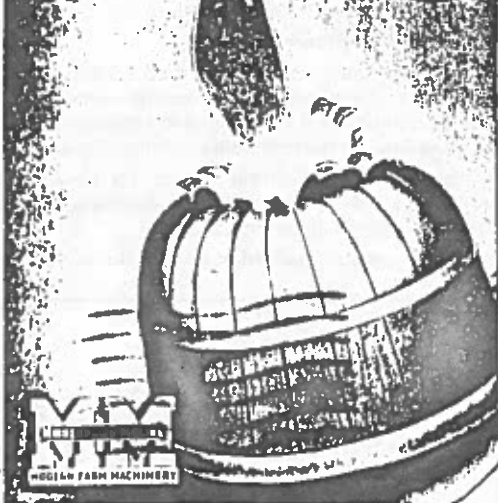
- \* Held in conjunction with ARMED FORCES DAY OPEN HOUSE at Aberdeen Proving Ground, Aberdeen, Maryland.
- \* This Aberdeen rally replaces the annual spring rally previously held at or near Summit airfield, Middletown, Delaware.
- \* Flea market starts Friday morning, and ends on Sunday mid-day. An auction will be held on Sunday. If a vendor at the flea market, it is probably NOT advisable to bring any current issue surplus. Flea market and other vehicle rally activities will be held rain or shine, even if Aberdeen open house is cancelled due to rain.
- \* Aberdeen's special Armed Forces Day outdoor display is within walking distance of the East Coast Spring Rally site. This static vehicle display is open from 9 AM to 5 PM on Saturday only. All historic military vehicles should be there during these times. Judging will be held there. All historic military vehicles must leave the rally/flea market site before 8:45 AM to allow time for transit and set up. Aberdeen wants heavy tracked armor to cause zero or minimal turf damage, especially in the static display area. MPs will escort tracked armor moving between the static display and the rally/flea market site (either way). Armor owners should prepare and bring appropriate signage so that the public will fully appreciate their historical value, and the difficulties in restoration.
- \* Numerous vendors will be selling hot dogs and hamburgers, etc. on Saturday. For those there on Friday, lunch will be available on the NCO Club. Brunch will be available on Sunday morning at the Officers Club at \$8.25. A Burger King is located in the vicinity of the static display area. Many restaurants of all types are located in the adjacent town of Aberdeen.
- \* The Ordnance Museum will be open Tuesday-Friday from 12 noon to 4:45, and on Saturday/Sunday from 10 AM to 4:45 PM. The outdoor vehicle displays that are there permanently are available for inspection during daylight hours, seven days a week. Remember the U.S.-built tanks are NOT adjacent to the Museum.
- \* For the spring rally for historic vehicle collectors, Aberdeen has granted us the use of a large field for the flea market and camping (marked "RALLY" on the map). Modern outhouses and water trailer will be available. No hook-ups for campers.

# ABERDEEN



# U.S. ARMY ABERDEEN PROVING GROUND

But our light won't stay **UNDER**  
the *Bushel*...



## THE *Original* "JEEP" ... a child of Minneapolis Moline

Current national publicity has obscured the fact that the first war machine named "JEEP" was born at Minneapolis-Moline and christened at Camp Ripley, Minnesota (with apologies to Ripley—"Believe it or not").

Back in 1938 Minneapolis-Moline engineers were already experimenting with the conversion of a farm tractor to an artillery prime mover; and in 1940, collaborating with Adjutant General E. A. Walsh, Commander of the Minn. National Guard, models were tested in maneuvers at Camp Ripley.

This new MM army vehicle was not a crawler tractor, truck nor tank, and yet it could do almost anything and it knew all the answers. Because of this, it brought to mind the Popeye cartoon figure called "Jeep" which was neither fowl nor beast, but knew all the answers and could do most anything. The National Guardsmen therefore named the MM vehicle the "Jeep". The "Jeep" name therefore is not a contraction of the term General Purpose (GP), and if it really had been, no doubt "Jeep" would have been spelled "Geep".

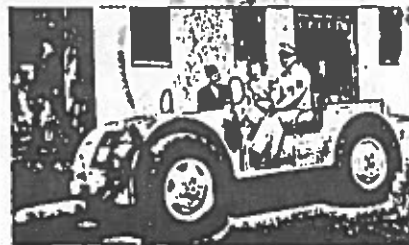
Since the original MM Jeep, Minneapolis-Moline has designed several additional models of Military tractors in cooperation with Army and Navy officials. Several models of MM Jeeps are now being produced in quantity for the Armed Forces of the United Nations, and in use throughout the world.



The Original Jeep on maneuvers in 1940



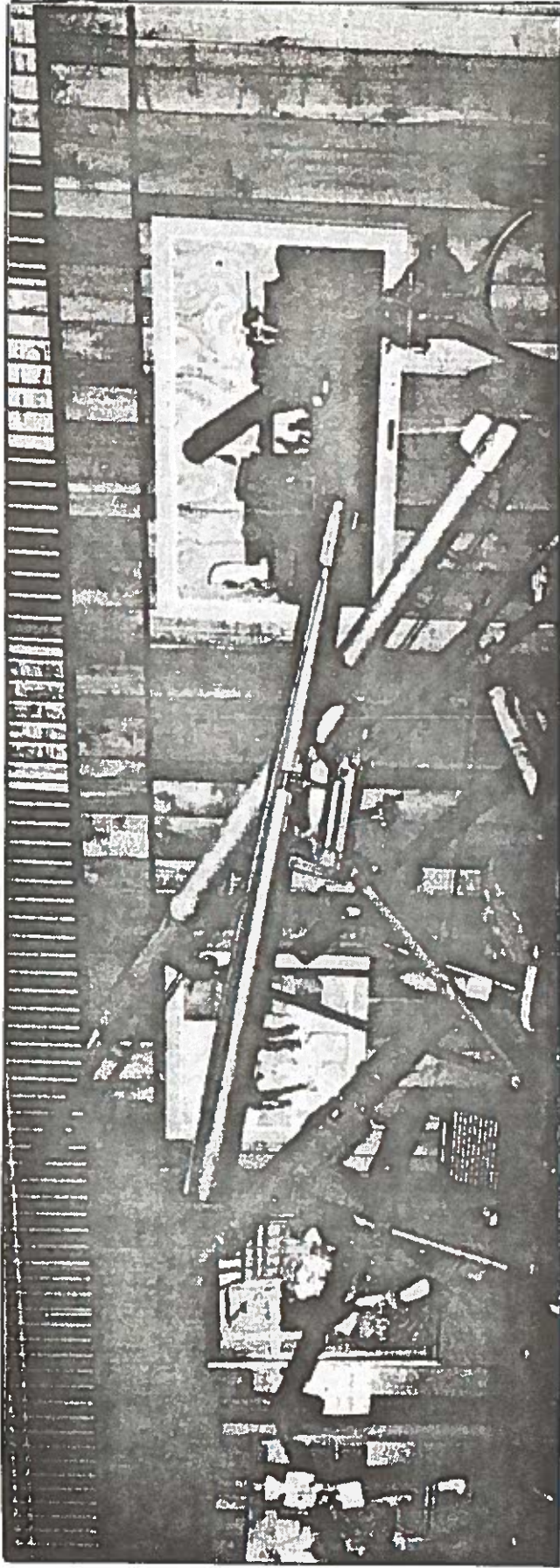
Six-wheel Jeep pulling anti-aircraft gun



Sergeant O'Brien at the wheel of new four-wheel Jeep

**MINNEAPOLIS-MOLINE POWER IMPLEMENT COMPANY**  
MINNEAPOLIS 1, MINNESOTA, U. S. A.

# U.S. ARMY ABERDEEN PROVING GROUND



The Ordnance Museum houses the world's largest collection of small arms. Other equipment, including Anzio Annie, and one of the prototype M1

Abrams tanks are located in the tank park adjacent to the main museum building.

## Ordnance Museum has vast collection

The Ordnance Museum at Aberdeen Proving Ground, a part of the U.S. Army Ordnance Center and School, welcomed over 250,000 visitors last year. It contains the world's most complete weapons collection, and also serves as a repository and showcase for a broad spectrum of other items.

Among the many exhibits, both within the main museum building and outside in the tank park area, are the famed "Anzio Annie" German railway cannon, Gen. John J.

Pershing's 1916 Locomobile staff car, and a gun that shoots around corners, developed in World War II.

The collection is constantly expanding. Several notable new exhibits include one of the first M1 Abrams tanks to be assembled, "Thunderbolt," a Pershing I missile, and the Bradley Fighting Vehicle. All are located in the tank park area adjacent to the main building.

Nearly 600 small arms, rifles and other weapons from all over the world

are on display. Other exhibits survey the history of firearms and show the evolution of a wide variety of weapons.

In addition, the museum is also home to the Ordnance Hall of Fame, which commemorates individuals throughout the history of Army ordnance who made major contributions to the field.

Outside the building are over 300 large weapons--tanks, cannons,

rockets and missiles, as well as a variety of vehicles. Of special interest is the "Atomic" cannon, a 240mm heavy gun that was part of the American arsenal from the mid-1940s to the mid-1960s. Many of the items in the museum were captured in America's foreign wars.


The museum is open to the public Tuesday through Friday from noon until 4:45 p.m., and on Saturdays and Sundays from 10 a.m. to 4:45 p.m. It is closed most holidays.

# Classified Advertising

**FOR SALE:** Camouflage Netting Kits, including spreaders and poles...\$195.00 per kit, F.O.B. Dover, DE. T. W. Murray, PO Box 214, Dover, DE 19903. 302/736-1790.

**FOR SALE:**

M151 side antenna brackets for auxiliary antenna, SC-D-48529...\$9.00 ea.  
 New Family Radio power cables CX4710, reconditioned, take offs, MT 1029 \$9.00 ea.  
 Prices F.O.B. Dover. T. W. Murray, P. O. Box 214, Dover, DE 19903. 302/736-1790. Ask for John.



**MIKE  
SINKOVIC  
CANVAS**

P.O. Box 114  
Zionsville, IN 46077  
317-789-6307

## DIRECTIONS TO ABERDEEN PROVING GROUND

**Interstate 95 (Kennedy Highway)**

**Traveling South:** Leave the highway at Aberdeen Interchange (5), turn left onto State Route 22 (Aberdeen Thruway) and proceed to the Aberdeen Proving Ground Harford Military Police Gate.

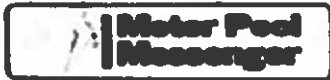
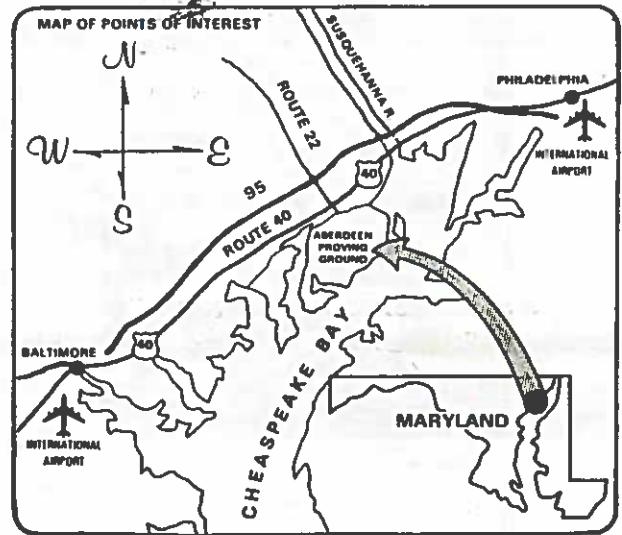
**Traveling North:** Leave the highway at the Aberdeen Interchange (5), and turn right onto State Route 22 (Aberdeen Thruway) and proceed to the Aberdeen Proving Ground Harford Military Police Gate.

**U.S. Route 40 (Pulaski Highway)**

**Traveling South:** Turn right off of U.S. Route 40 at the North end of Aberdeen, Md., onto the ramp leading to State Route 22 (Aberdeen Thruway) and proceed to Aberdeen Proving Ground Harford Military Police Gate.

**Traveling North:** Turn right off of U.S. Route 40 at the South end of Aberdeen, Md., onto Maryland Boulevard and proceed to the Military Police Gate.

Direction signs are posted at all U.S. Route 40 turn-off points.



P.O. BOX 1913, BLOOMFIELD, N.J. 07003

