



MOTOR POOL MESSENGER

MTA

Representing
North Jersey
Military Vehicle
Enthusiasts....

A Member of AMVEG.

Editor: Dennis R. Spence
PO Box 1913, Bloomfield,
N.J. 07003
201-743-1851

Military Transport Association, Inc.

Spring 1989
Volume 17, Number 2

FROM THE PRESIDENT

Well, it looks like the parade and rally season is here again. I would like to thank everyone who participated in the Picatinny Arsenal parade on May 13. We had an excellent turn out, and the weather was nice.

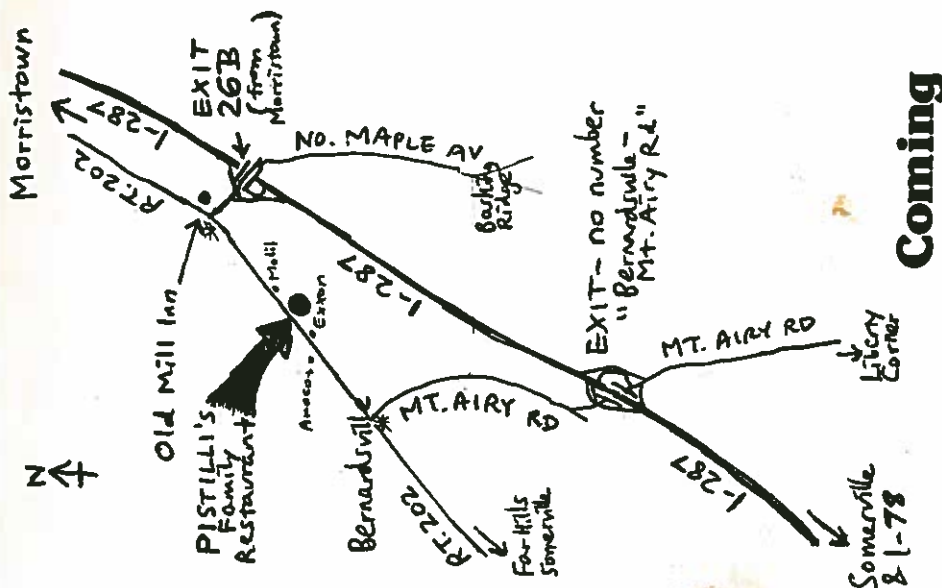
I would like to mention that we have signed up several new members in the last few months.

The Bonanza restaurant in Florham Park, where our monthly meetings have been held since January 1977 (12 years!) is for sale, so keep an eye open for a new permanent meeting place. Note the location of the June meeting, in Bernardsville!

Well, that's it for now!

Keep 'em rolling,
your President,

P.S. Remember the big 4th of July parade! Let's all make it!!!



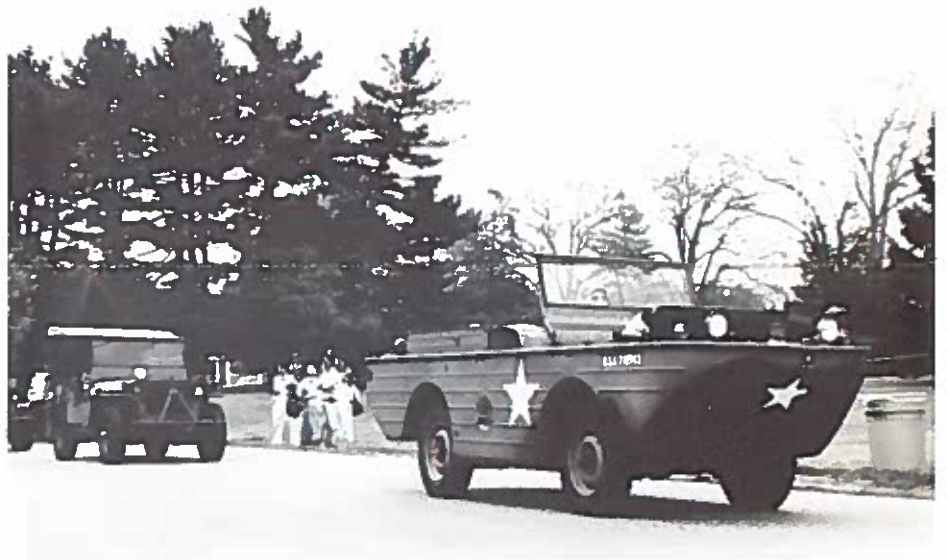
Coming

- June 12, Monday - Monthly MTA meeting - at Pistilli's in Bernardsville (see map). Pizza and soda by MTA; everyone can bring a guest. 8pm. NOT in Florham Park...
- July 4, Tue. - Florham Park parade.
- July 10, Monday - Monthly MTA meeting - at Pistilli's.
- August 14, Monday - MTA mtg.
- Sept. 11, Monday - MTA meeting.
- Sept. 23, Sat. - Sarafan Open House, co-sponsored by MTA.

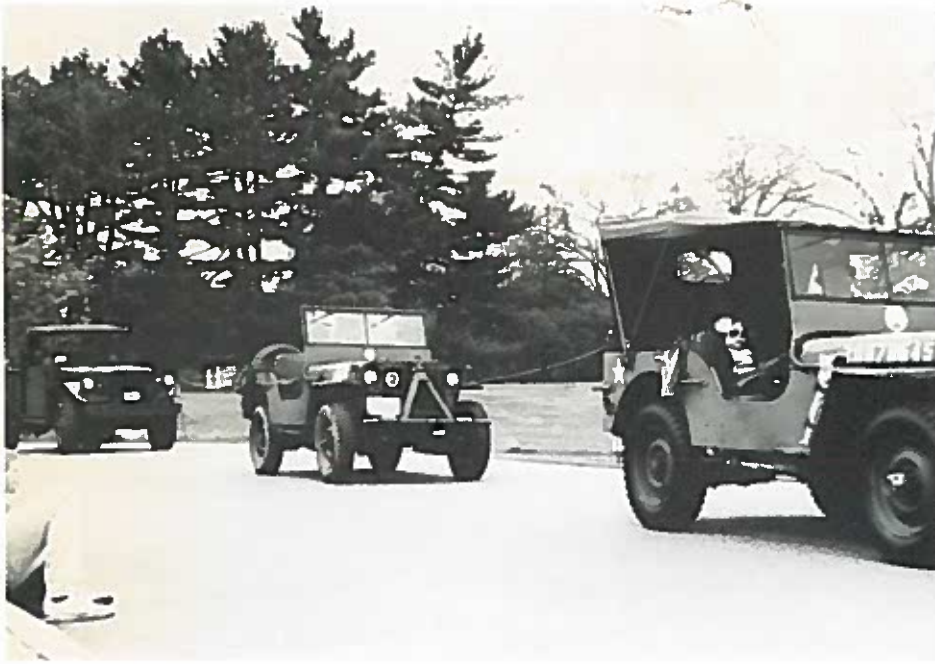
Dates of MV rallies are listed every issue of MILITARY VEHICLES Magazine.



Picatinny Arsenal



**Saturday
May 13, 1989**



Armed Forces Day 1989



Classified Advertising

All phone numbers are area code 201 unless otherwise noted.

FOR SALE

M-37 type ambulance type body - needs hood and carb. The rest of vehicle is pretty good, little rust. No title. Russ Fisher, Fisher Transmission, Fairfield.

Autocar, 1942-43, cab over single axle tractor, hard cab. Runs good. Asking \$2750. Ray Bently, Adams Metal, Ledgewood, N.J.

GMC CCKW 353, 1945, with winch, complete cab, canvas. \$3,500. John Boyle. 964-9358

Bantam civilian trailer, WW2 era or so. Some rust, never modified. \$350. Lou Sliazis, 887-0771 after 6pm.

Trailer, M-100, very good plus condition, with manual, G.I. tarp, lube chart, \$675, Harold Ratzburg, 887-2574.

Clark Cortez motor home. Excellent condition. Ted Bromage, 966-1080.

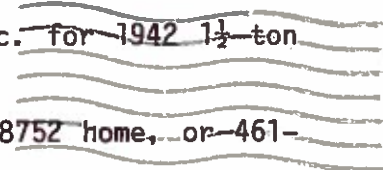
Water pumps - most types for MVs rebuilt. Marc Ziegler after 1800 hr. 263-1923.

GMC M211 6x6 truck. Fairly clean, runs excellently. \$2000. Lou Zackman, Islip, Long Island, 518-581-6076.

WANTED

Carb. rebuild kit - fuel pump - hydrovac parts - body parts, etc. for 1942 1½ ton Chevrolet cargo truck. Al Axelrad, 884-0051 after 6pm

Dodge ½ ton tailgate, military or civilian, Steve Krentler, 764-8752 home, or 461-0565 work.



DON'T FORGET

Meetings are NO longer in Florham Park! See page one

Editor: Dennis R. Spence,
PO Box 1913, Bloomfield,
N.J. 07003



FIRST CLASS

001560 2200T
THOMAS WEAVER
71 MT HOPE RD
ROCKAWAY NJ 07866